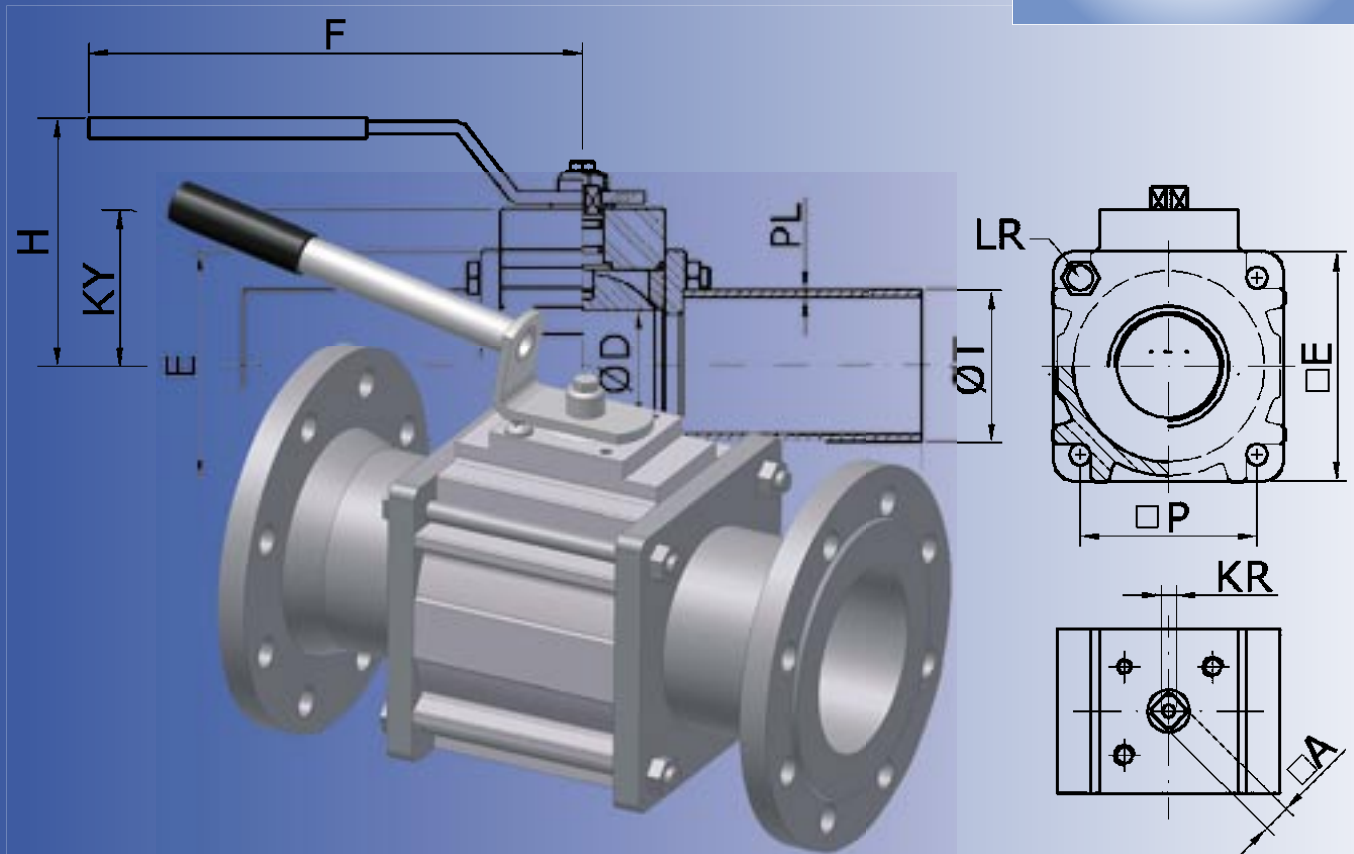




# JOUKA

## PRODUCT GUIDE

BALL VALVES  
ACTUATORS  
ACCESSORIES



# TABLE OF CONTENTS

Decisive benefits . . . . .	3-5
Aluminium valves . . . . .	6
Steel valves . . . . .	7
Stainless steel valves . . . . .	8
Process industry . . . . .	9-10
Paper industry . . . . .	11
Chemical industry . . . . .	12
Machinery and hydraulics . . . . .	13
Vehicles . . . . .	14-15
Dimension chart . . . . .	16-19
Type selection . . . . .	20
Maintenance . . . . .	21-23
Actuators . . . . .	24-26
Safety valves . . . . .	27
Subcontracting . . . . .	28

All rights reserved. Copyright Jouka Oy. Ver. 2 (2007).



**WWW.JOUKA.FI**

Somerotie 4, FIN-33470 YLÖJÄRVI, FINLAND  
Tel. +358 3 359 7500, Telefax +358 3 3597521

# DECISIVE BENEFITS

## **JOUKA is Your best choice:**

Own design and manufacturing in an own factory in Ylöjärvi Finland since 1957.



### **Advantageous, long lifecycle**

Spare parts directly from factory. All components available. Experienced and capable

Ball valve construction is developed according to customer feedback. That is why it is long lasting.

### **Variations**

From manual operated to computer controlled.

### **Materials**

Stainless steel, aluminium, steel. Also available Hastelloy, Duplex, SMO, titan, colour metals. Chromium coatings, hard- and anodized surfaces.

### **Special constructions**

Jouka is manufacturing special models directly for customer need.

### **Large range of different models**

Valves can be equipped with different kind of regulation-, control-, locking-, connection- and operation equipments.

### **Design support**

We will assist You in designing the valve for right purpose. You can also utilize our 3D and 2D drawings.

### **According to EU-Directives**

The bar code is tracing materials and manufacturing.

**WWW.JOUKA.FI**

Somerotie 4, FIN-33470 YLÖJÄRVI, FINLAND  
Tel. +358 3 359 7500, Telefax +358 3 3597521

## There is no need to regret the buying of a good product!

### The critical factors when selecting a valve

Many valve can work when they are tested, but after longer time usage the maintenance costs can easily multiply the original price of the valve. Jouka could have been following the functioning of its own products for almost 50 years time period. Even if you can get a complete spare part set from us, the sale of spare parts is only 0,2 % from our turnover. That tells that Jouka ball valve is made to be reliable.

There are even at the 1970's installed Jouka valves still fully operating in various functions and positions. For example the ball sealings in Jouka valves are notable wide so that elapsing margin would be enough for many years. Many times there are contaminants flowing with the fluids in the piping system and even different kind of fibrous materials that cause erosion. Jouka valve is protected better against erosion. Also the bigger size of the ball gives better close-up surface between the ball hole and the sealings. Because we don't use casts in the framework, there aren't any problems caused by non-homogenous porous material.

*Left in the photo* there are parts of Jouka ball valve. Both valves are sold as a same size despite their measurement and quality differences. Every Jouka valve has as a standard equipment an engine support that can be used with any actuator in the market.



**WWW.JOUKA.FI**

Somerotie 4, FIN-33470 YLÖJÄRVI, FINLAND  
Tel. +358 3 359 7500, Telefax +358 3 3597521

# DECISIVE BENEFITS

## Characteristic for all Jouka ball valves:

**Body components are not castings**, material is homogenous, the media cannot get absorbed to the body material.

**Easy to install:** end pieces can be flanged, plain, with weld joints, R-thread or hose joints.

**Easy to service and repair:** valve can be removed from the pipe line without removing the flanges.

**Reliable and trouble-free function** in all positions and small flow losses.

**Can also be equipped** with pneumatic, hydraulic or electric actuator.

**Positioner** and limit switch versions.

**Ball sealings** of material PTFE or specials: carbonfiber, graphite, PTFE/AISI 316. Metal sealings, stellite-, colour metal- and filler sealings.

**Balls** can be shell or massive type, hard chromium coated or aluminium, steel, stainless, TiNi -coated or other special materials.



**WWW.JOUKA.FI**

Somerotie 4, FIN-33470 YLÖJÄRVI, FINLAND  
Tel. +358 3 359 7500, Telefax +358 3 3597521

# ALUMINIUM VALVES

**PN 16 / 25**

**DN 20-100**

**Temperature class -40 °C / +130°C, pH 4.5 - 8.5**

## Applications:

Air and gas lines, lubricants, fuels and oils, coolants, active water lines, sewages, flushing lines, powders, granulates, fire extinguish lines, tank vehicles, fire vehicles, sewage trucks. Can be equipped with stainless steel or hard chromium coated balls. Standard aluminium ball always anodized. Flanges can be of stainless steel material, too.

## Benefits:

- Economical solution
- Light weight, smaller vibrations on pipe lines
- Modular construction
- No castings in body
- Anti corrosive



## Special light

Ball valve with aluminium body is best known in the Jouka product family.

**WWW.JOUKA.FI**

Somerotie 4, FIN-33470 YLÖJÄRVI, FINLAND  
Tel. +358 3 359 7500, Telefax +358 3 3597521

# STEEL VALVES

**PN 16 / 25, Available PN 64/80**

**DN 10-200**

**Temperature class; -40°C - +180°C,  
with special and metal sealings +230°C**



## **Applications:**

Gas lines, hot and cold water and all oils.

## **Benefits:**

- Stainless ball and shaft construction
- Available with hard chromed ball
- Modular construction
- Special construction available



**WWW.JOUKA.FI**

Somerotie 4, FIN-33470 YLÖJÄRVI, FINLAND  
Tel. +358 3 359 7500, Telefax +358 3 3597521

# STAINLESS STEEL VALVES

**PN 16 / 25, available PN 64/80**

**DN 10-200**

**Temperature class; -40°C - +180°C,  
with special and metal sealings +230°C**

## **Applications:**

All areas with corrosive mediums or corrosive environment. Process- and chemical industry, paper industry, machine and vehicle builders.

## **Benefits:**

- Good chemical resistance
- Easy construction for variations
- Also Fire Safe (ISO 10 497) available
- Atex -models (hazardous surroundings)
- Special constructions available



**WWW.JOUKA.FI**

Somerotie 4, FIN-33470 YLÖJÄRVI, FINLAND  
Tel. +358 3 359 7500, Telefax +358 3 3597521

# PROCESS INDUSTRY

## Jouka is the expert in process industry applications

- Robust hydraulic Joline actuator.



- Filler sealing to prevent blocking up of medium in valve housing.



- Special sealing material PTFE+AISI 316 alloy.



- Higher pressure class valve.



**WWW.JOUKA.FI**

Somerotie 4, FIN-33470 YLÖJÄRVI, FINLAND  
Tel. +358 3 359 7500, Telefax +358 3 3597521

# PROCESS INDUSTRY



Actuator + limit switch unit.  
Protection class IP 64.



Acid-resistant metal, PTFE  
gaskets of ball and PTFE O-rings.



3-way valve with bottom outlet.  
Handle turns 180 degrees.



Ball and sealings for 3-way valve.



Simple and economic V-opening  
for flow adjustment.



Ball valve made of steel material  
Duplex for special conditions.

**WWW.JOUKA.FI**

Somerotie 4, FIN-33470 YLÖJÄRVI, FINLAND  
Tel. +358 3 359 7500, Telefax +358 3 3597521

# PAPER INDUSTRY



3-way ball valve for de-inking in recycle pulp process.



Stainless sample taking valve with metallic sealings (stellite).



Full-hole DN200, ball and metallic gaskets with hard chrome plating. For high temperatures and abrasive medium.



Special valve for paper machine



Valves and actuators for analyzer.

**WWW.JOUKA.FI**

Somerotie 4, FIN-33470 YLÖJÄRVI, FINLAND  
Tel. +358 3 359 7500, Telefax +358 3 3597521

# CHEMICAL INDUSTRY



Stainless ball valve with double acting pneumatic actuator, controlled by digital positioner. Continually adjusted computer control keeps the flow and/or pressure in constant value.



Safety valve with automatic spring return - prevents forgetting the valve into open position.



Valves made of Hastelloy.



Single-acting actuator ensures safety in case of malfunction.



Duplex valve for sampling.

**WWW.JOUKA.FI**

Somerotie 4, FIN-33470 YLÖJÄRVI, FINLAND  
Tel. +358 3 359 7500, Telefax +358 3 3597521

# MACHINERY AND HYDRAULICS



Hose connectors available in numerous sizes and forms.



Aluminium valve with hose connection and adjustable handle for different positions.



Flush valve: weight of assembly was halved with compact and more economical customer - solution.



Special valve for the cold conditions of Siberia.



TiNi coated ball and titanium ball.

**WWW.JOUKA.FI**

Somerotie 4, FIN-33470 YLÖJÄRVI, FINLAND  
Tel. +358 3 359 7500, Telefax +358 3 3597521



Aluminium valve with sector-ball, specially for pneumatic powder and flour transportation systems and - vehicles.



Stainless valve with actuator flange according to ISO 5211 standard.



“Kamlok” coupling.

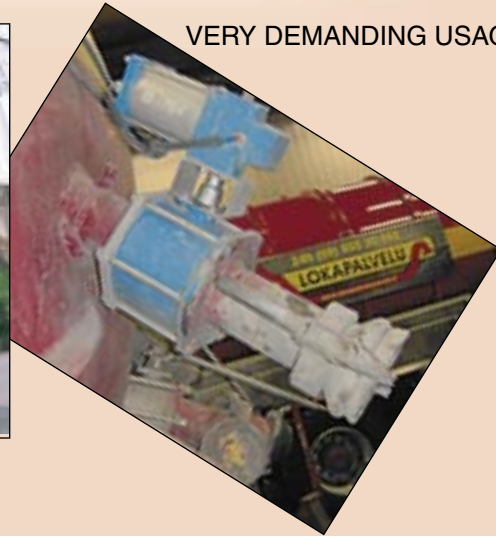


Manifold for acid media transport.

# VEHICLES



VERY DEMANDING USAGE



## SEWAGE SUCTION UNITS

Ball valve DN 100 made of Steel, either with stainless or steel ball with hard chromium coating. Jouka benefit is durability in demanding, abrasive usage. Can be completed with very robust Jouka Joline pneumatic actuator.

(photo)

## LIGHT AND CAPABLE ALTERNATIVE

DN 100 valve with aluminium body with hollow, but tubed hard chromium coated ball. For very demanding usage.

## VALVES FOR TANK VEHICLES

Light weight aluminium body.

Either with stainless or anodized aluminium ball.

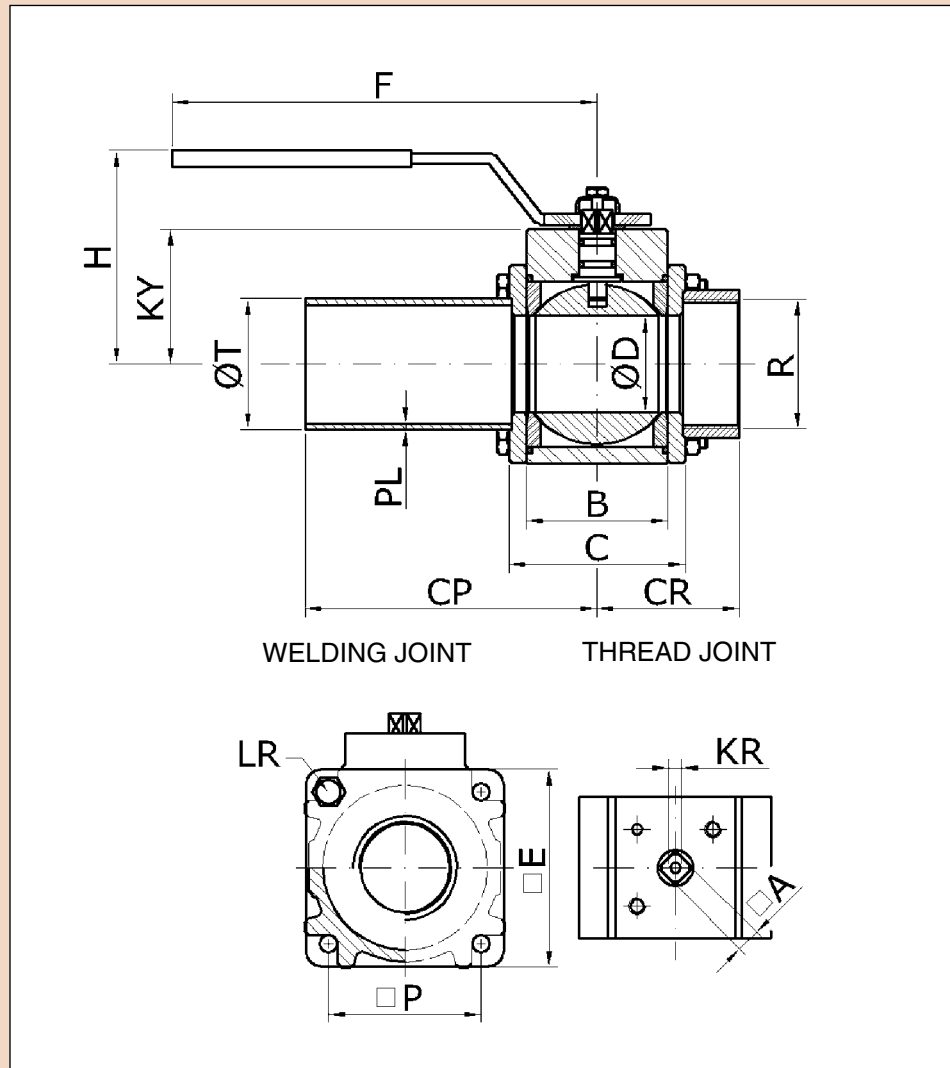
**Stainless** (AISI 316) Jouka valves are widely utilized in chemical transport vehicles.



**WWW.JOUKA.FI**

Somerotie 4, FIN-33470 YLÖJÄRVI, FINLAND  
Tel. +358 3 359 7500, Telefax +358 3 3597521

# ALUMINIUM VALVES

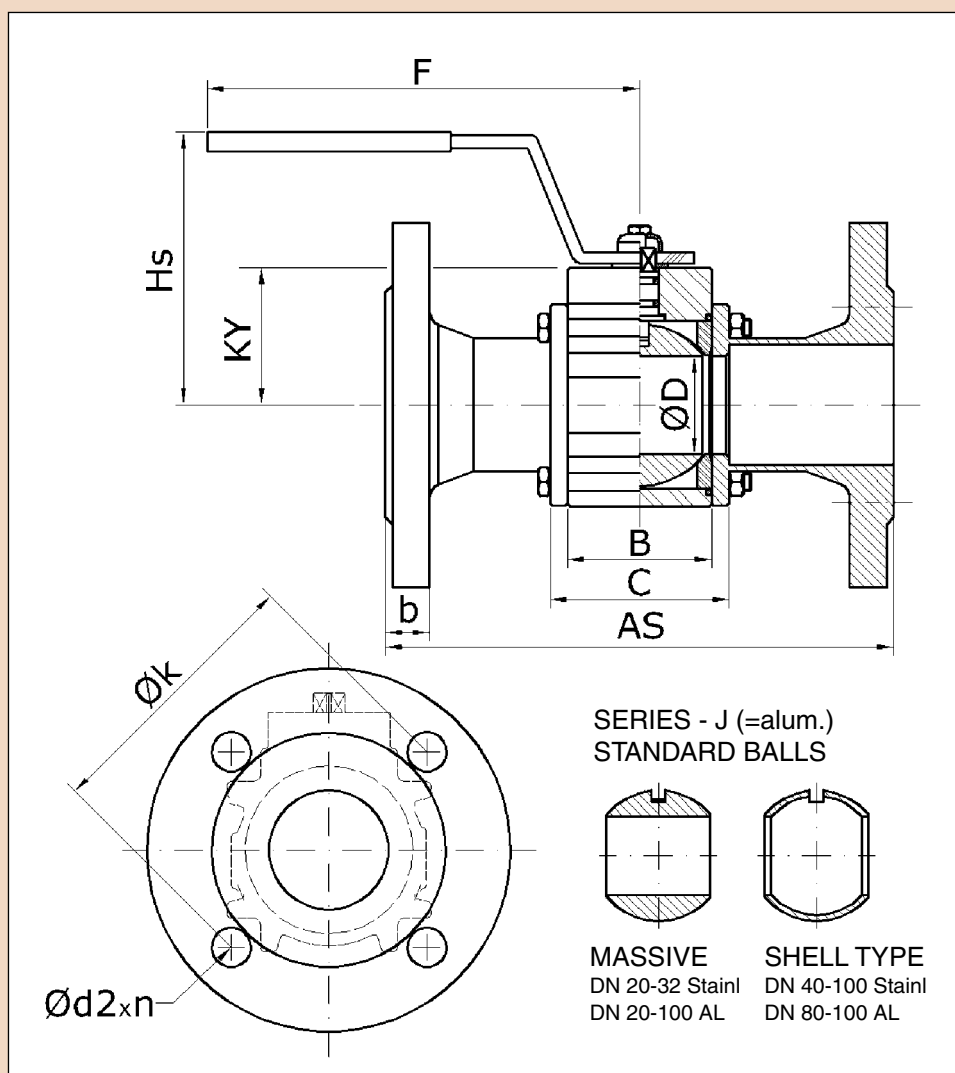


TYP	NOMIN. SIZE DN		D	PN	A	B	H	E	F	R	KY	P	KR
	mm	in											
J020	20	3/4	25	25	11	36	60	61	150	3/4"	40	46	M6
J025	25	1	25	25	11	36	60	61	150	1"	40	46	M6
J032	32	1 1/4	32	25	11	50	90	74	200	1 1/4"	53	57	M6
J040	40	1 1/2	50	25	11	65	100	91	200	1 1/2"	62	70	M6
J050	50	2	50	25	11	65	100	91	200	2"	62	70	M6
J065	65	2 1/2	55	16	14/17	77	160	112	260	2 1/2"	74	86	M8
J080	80	3	65	16	14/17	90	165	124	260	3"	81	97	M8
J100	100	4	90	16	14/17	126	190	167	260	4"	106	129	M8

**WWW.JOUKA.FI**

Somerotie 4, FIN-33470 YLÖJÄRVI, FINLAND  
Tel. +358 3 359 7500, Telefax +358 3 3597521

# ALUMINIUM VALVES

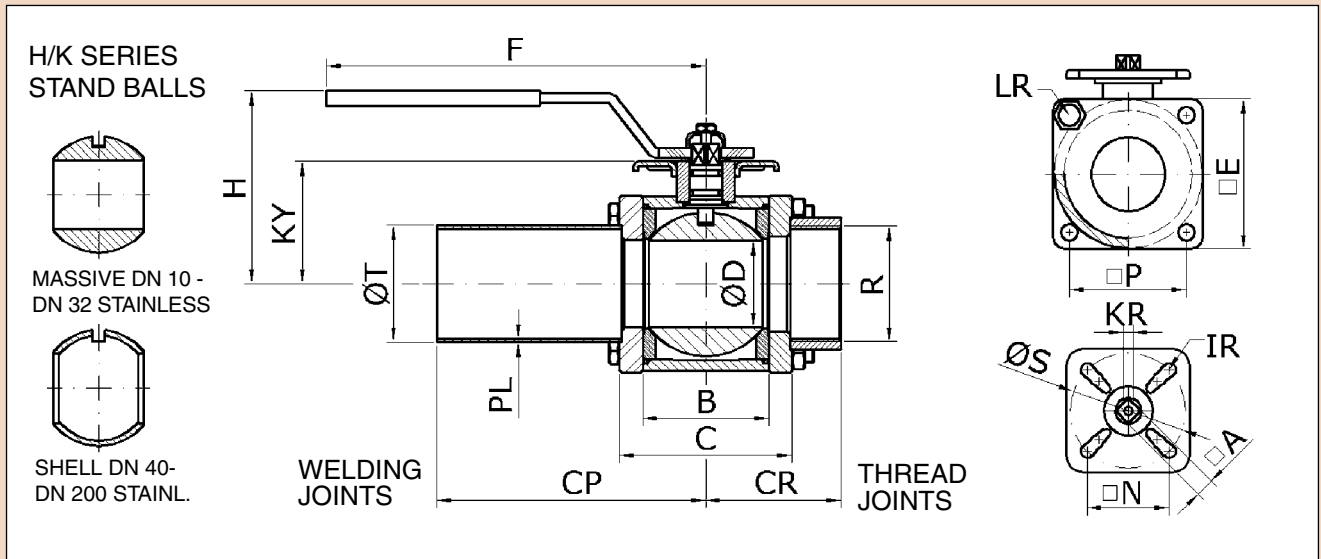


						DIN 2633 PN16						
LR	C*	CP*	T	PL*	CR*	AS	d2	n	k	b	Hs	PKY
M8	52	121	26,9	2,3	43	150	14	4	75	18	75	1
M8	52	121	33,7	2,6	46	160	14	4	85	18	75	1
M8	66	128	42,4	2,6	56	180	18	4	100	18	110	1,5
M8	81	136	48,3	2,6	67	200	18	4	110	18	100	2,4
M8	81	136	60,3	2,9	69	230	18	4	125	20	100	2,6
M10	101	146	76,1	2,9	81	290	18	4	145	18	125	4,3
M10	114	152	88,9	3,2	94	310	18	8	160	20	135	5,8
M12	150	170	114,3	3,2	117	350	18	8	180	20	130	10,8

\*The measures are directive. The measures of the table are to steel pipe fittings.

**WWW.JOUKA.FI**

Somerotie 4, FIN-33470 YLÖJÄRVI, FINLAND  
Tel. +358 3 359 7500, Telefax +358 3 3597521

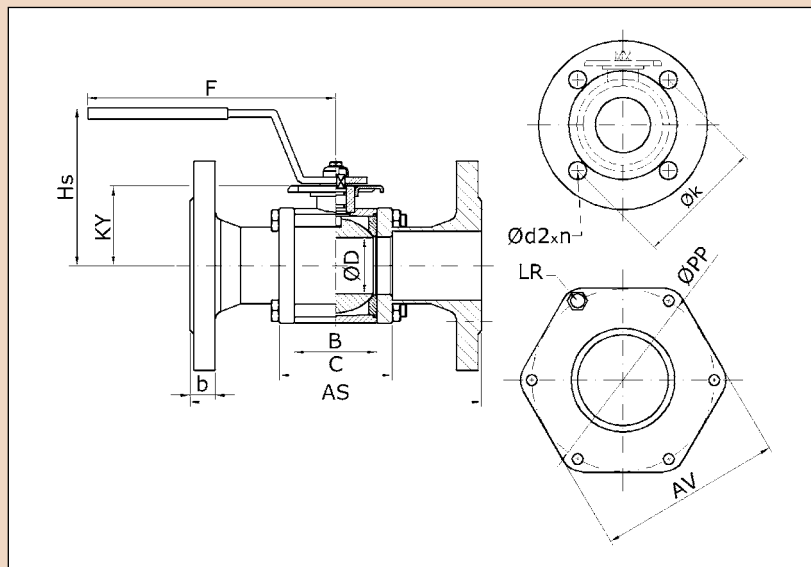


NOMIN. SIZE DN				ISO													
mm	in	D	PN	5211 F	A	B	H	E	F	R	KY	P	KR	LR	PP	AV	
10	3/8	15	25	F05	11	30	50	47	150	3/8"	31	32	M6	M6	-	-	
15	1/2	15	25	F05	11	30	50	47	150	1/2"	31	32	M6	M6	-	-	
20	3/4	25	25	F05	11	36	60	61	150	3/4"	39	46	M6	M8	-	-	
25	1	25	25	F05	11	36	60	61	150	1"	39	46	M6	M8	-	-	
32	1 1/4	32	25	F05,F07	11	50	90	74	200	1 1/4"	54	57	M6	M8	-	-	
40	1 1/2	48,5	25	F05,F07	11	65	100	91	200	1 1/2"	63	71	M6	M10	-	-	
50	2	48,5	25	F05,F07	11	65	100	91	200	2"	63	71	M6	M10	-	-	
65	2 1/2	48,5	16	F05,F07	11	65	100	91	200	2 1/2"	63	71	M6	M10	-	-	
65	2 1/2	55	16	F07,10	17	77	165	112	260	2 1/2"	73	86	M8	M10	-	-	
65	2 1/2	67	16	F07,10	17	90	170	124	260	2 1/2"	81	97	M8	M10	-	-	
80	3	67	16	F07,10	17	90	170	124	260	3"	81	97	M8	M10	-	-	
80	3	80	16	F07,10	17	116	185	152	260	3"	94	115	M8	M12	-	-	
100	4	80	16	F07,10	17	116	185	152	260	4"	94	115	M8	M12	-	-	
100	4	90	16	10,12,14	22	126	205	167	310	4"	103	129	M8	M12	-	-	
100	4	100	16	10,12,14	22	136	220	202	310	4"	111	-	M8	M12	200	202	
125	5	100	16	10,12,14	22	136	220	202	310	-	111	-	M8	M12	200	202	
125	5	125	16	10,12,14	22	164	240	235	310	-	132	-	M8	M16	220	235	
150	6	125	16	10,12,14	22	164	240	235	310	-	132	-	M8	M16	220	235	
150	6	150	16	10	27	186	315	272	600	-	167	-	M8	M20	272	275	
200	7	150	16	10	27	186	315	272	600	-	167	-	M8	M20	272	275	
200	7	200	16	10	27	242	351	366	600	-	206	-	M8	M20	351	366	

**WWW.JOUKA.FI**

Somerotie 4, FIN-33470 YLÖJÄRVI, FINLAND  
Tel. +358 3 359 7500, Telefax +358 3 3597521

# ND STAINLESS



ISO 5211	IR	N	S
F05	M6	35,4	50
F07	M8	49,5	70
F10	M10	72,1	102
F12	M12	88,4	125
F14	M16	99	140

R = Thread joints  
 P = Long welding joints  
 T = Short weld. joints  
 D = DIN flanges  
 I = Without flanges

If short welding joints; the total length of valve according to agreement.

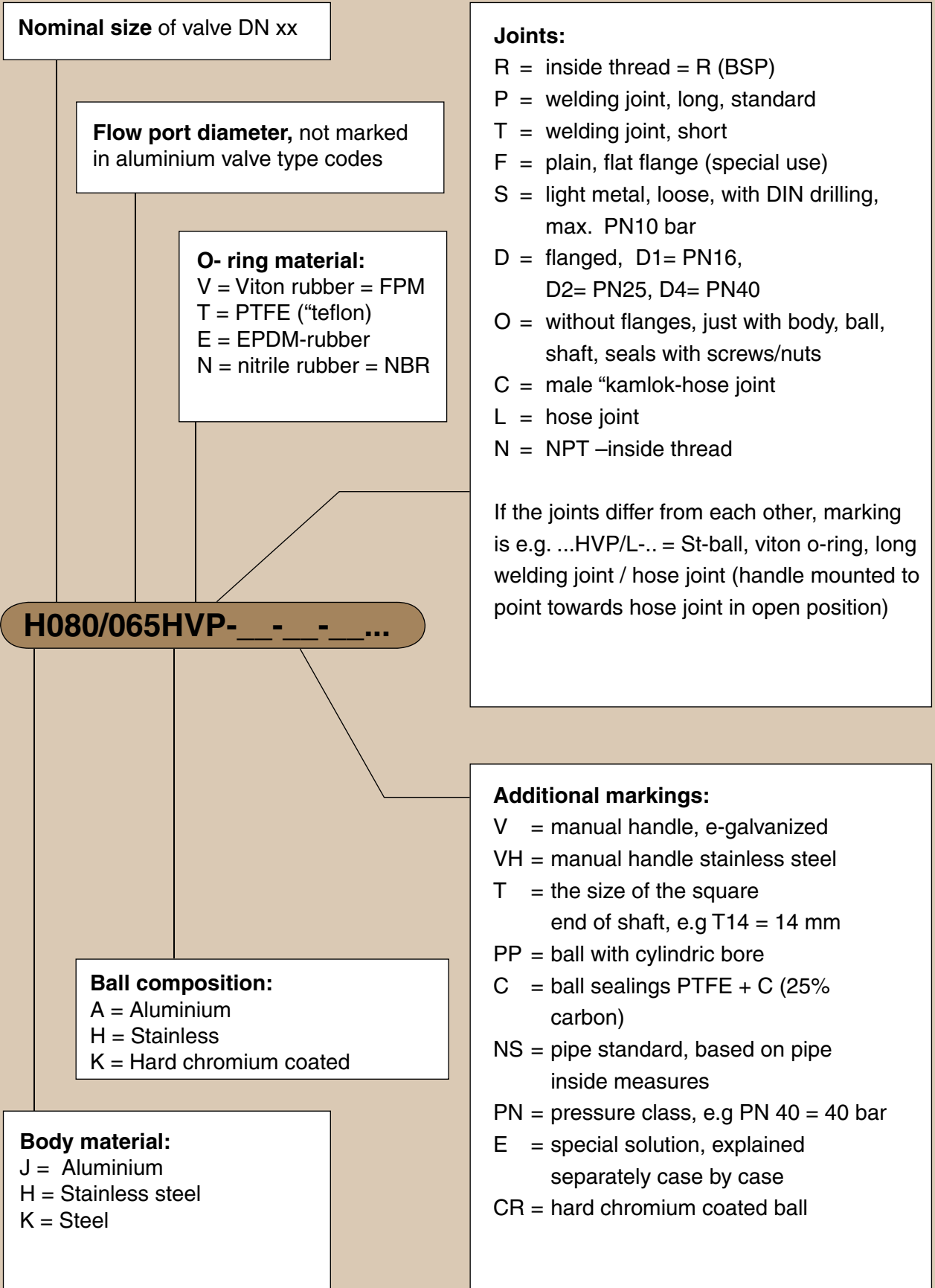
C*	CP*	T	CR*	PL		DIN						WEIGHTS (Kg)				
				H	K	AS	d2	n	k	b	Hs	R	P	T	D	I
42	115	17,2	45	1,4	1,8	130	14	4	60	16	70	0,6	0,7	0,6	2,0	0,4
42	115	21,3	54	1,4	2	130	14	4	65	16	70	0,7	0,7	0,6	2,2	0,4
51	120	26,9	42	1,5	2,3	150	14	4	75	18	80	1,4	1,5	1,4	3,6	0,7
52	120	33,7	45	2	2,6	160	14	4	85	18	80	1,4	1,6	1,4	4,0	0,7
66	127	42,4	54	2	2,6	180	18	4	100	18	115	2,4	2,6	1,9	5,5	1,0
85	137	48,3	64	2	2,6	200	18	4	110	18	125	3,5	4,0	3,6	8,3	2,0
85	137	60,3	68	2	2,9	230	18	4	125	20	125	3,5	4,1	3,7	9,4	2,0
85	137	76,1	72	2	2,9	290	18	4	145	18	125	3,7	4,2	3,7	11,2	2,0
101	145	76,1	80	2	2,9	290	18	4	145	18	165	6,3	7,0	6,4	13,6	3,7
114	151	76,1	86	2	2,9	290	18	4	145	18	170	8,6	9,6	8,9	16,4	5,1
114	151	88,9	89	2	3,2	310	18	8	160	20	170	8,6	9,6	8,9	18,5	5,1
140	164	88,9	102	2	3,2	310	18	8	160	20	185	14,3	15,1	14,7	22,5	10,3
140	164	114,3	102	2,5	3,6	350	18	8	180	20	185	14,3	15,1	14,8	24,6	10,3
158	173	114,3	111	2,5	3,6	350	18	8	180	20	205	20,0	19,8	19,0	29,3	12,5
168	177	114,3	116	2,5	3,6	350	18	8	180	20	220	23,5	23,3	22,5	32,8	15,4
168	177	139,7	-	2,5	4	400	18	8	210	22	220	-	23,3	22,5	36,5	15,4
204	196	139,7	-	2,5	4	400	18	8	210	22	240	-	-	37,8	51,8	25,7
204	196	168,3	-	3	4,5	480	22	8	240	22	240	-	-	37,8	53,7	25,7
226	207	168,3	-	3	4,5	480	22	8	240	22	315	-	-	64,8	80,7	44,3
226	207	219,1	-	3	6,3	600	22	12	295	24	315	-	-	65,3	87,2	44,3
282	236	219,1	-	3	6,3	457	22	12	295	24	315	-	-	-	115	-

\*The measures are directive. The measures of the table are to steel pipe fittings.

**WWW.JOUKA.FI**

Somerotie 4, FIN-33470 YLÖJÄRVI, FINLAND  
 Tel. +358 3 359 7500, Telefax +358 3 3597521

# TYPE SELECTION



**WWW.JOUKA.FI**

Somerotie 4, FIN-33470 YLÖJÄRVI, FINLAND  
Tel. +358 3 359 7500, Telefax +358 3 3597521



## JOUKA OY



### Palloventtiili • Ball valve

Asennus- ja käyttöohjeet • Monteringsanvisningar  
 Mounting instructions • Monteringsanvisning  
 Instructions de montage • Montagehinweise

<p>JOUKA OY                  Vestonkatu 15                  33730 Tampere                  FINLAND                  ☎ +358 3 359 7500                  www.jouka.fi</p>																											
<p>A  <math>&gt;80\text{mm}</math></p> <p>B  <math>&gt;80\text{mm}</math></p> <p>C  <math>&gt;80\text{mm}</math></p>	<p>← A  <math>&gt;80\text{mm}</math></p>	<p>↑ A  <math>&gt;80\text{mm}</math></p>	<p>↑ A  <math>&gt;80\text{mm}</math></p>																								
<p>B 1  <math>&gt;80\text{mm}</math></p>	<p>B 2  <math>&gt;80\text{mm}</math></p> <table border="0"> <tr> <td>M6</td><td>12 Nm</td> <td>M12</td><td>90 Nm</td> </tr> <tr> <td>M8</td><td>30 Nm</td> <td>M16</td><td>210 Nm</td> </tr> <tr> <td>M10</td><td>60 Nm</td> <td>M20</td><td>315 Nm</td> </tr> </table>	M6	12 Nm	M12	90 Nm	M8	30 Nm	M16	210 Nm	M10	60 Nm	M20	315 Nm	<p>C 1  <math>&gt;80\text{mm}</math></p>	<p>C 2  <math>&gt;80\text{mm}</math></p> <table border="0"> <tr> <td>M6</td><td>12 Nm</td> <td>M12</td><td>90 Nm</td> </tr> <tr> <td>M8</td><td>30 Nm</td> <td>M16</td><td>210 Nm</td> </tr> <tr> <td>M10</td><td>60 Nm</td> <td>M20</td><td>315 Nm</td> </tr> </table>	M6	12 Nm	M12	90 Nm	M8	30 Nm	M16	210 Nm	M10	60 Nm	M20	315 Nm
M6	12 Nm	M12	90 Nm																								
M8	30 Nm	M16	210 Nm																								
M10	60 Nm	M20	315 Nm																								
M6	12 Nm	M12	90 Nm																								
M8	30 Nm	M16	210 Nm																								
M10	60 Nm	M20	315 Nm																								



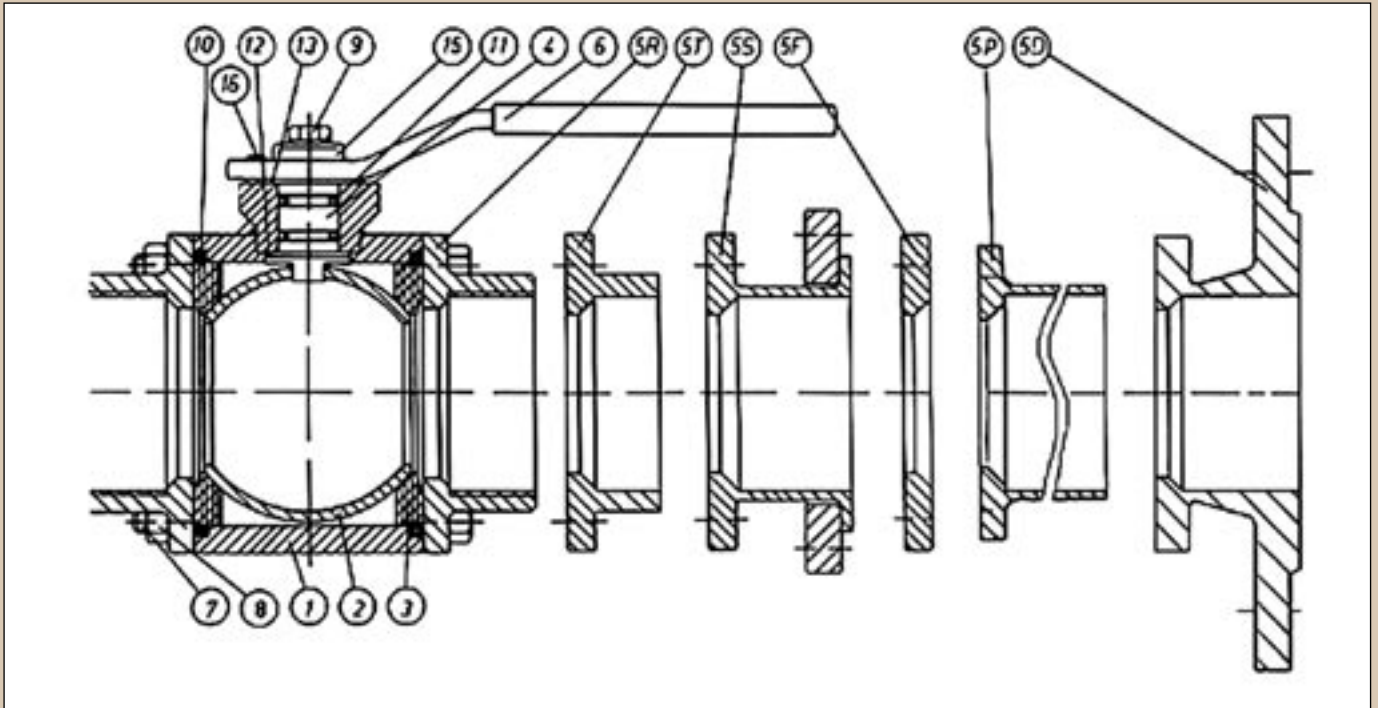
**WWW.JOUKA.FI**

Somerotie 4, FIN-33470 YLÖJÄRVI, FINLAND  
 Tel. +358 3 359 7500, Telefax +358 3 3597521

# MAINTENANCE



Spare parts even for 40 years old Jouka valves.



## SPARE PARTS CATALOGUE J, H AND K-SERIES

Part no	Quantity	Name	Materials		Part no	Quantity	Name	Materials	
			Type H	Type K				Type H and K	
1	1	Body	AISI 316	St 52	7	4 (6)	Hexagon screw	St, galvanized or AISI 316	
2	1	Ball	AISI 316	AISI 316	8	4 (6)	Hexagon nut	St, galvanized or AISI 316	
3	2	Ball seal *)	PTFE/PTFE+C	PTFE/PTFE+C	9	1	Hexagon screw	St, galvanized or AISI 316	
4	1	Shaft	AISI 316	AISI 316	10	2	O-ring *)	NBR, EPDM, Viton or PTFE	
5 R	2	R-thread union	AISI 316	St 37 **)	11	2	O-ring *)	Viton, PTFE, NBR or EPDM	
5 T	2	Short weld. union	AISI 316	St 35.8 **)	12	1	Bearing *)	PTFE	
5 S	2	Loose flange PN 10	AISI 316	St 37 **)	13	1	Washer *)	PTFE	
5 F	2	Smooth extra precision finished union	AISI 316	St 37 **)	15	1	Washer	Fe, galvanized or AISI 316	
5 D	2	Solid flange PN25 or PN 16	AISI 316	St 37 **)	16	1	Limiting pin	St 52 or AISI 316	
5 P	2	Long Weld. union	AISI 316	St 35.8 **)					
6	1	Handle	St, galvanized or AISI 316	St, galvanized **)					

\*\*) Also AISI 316

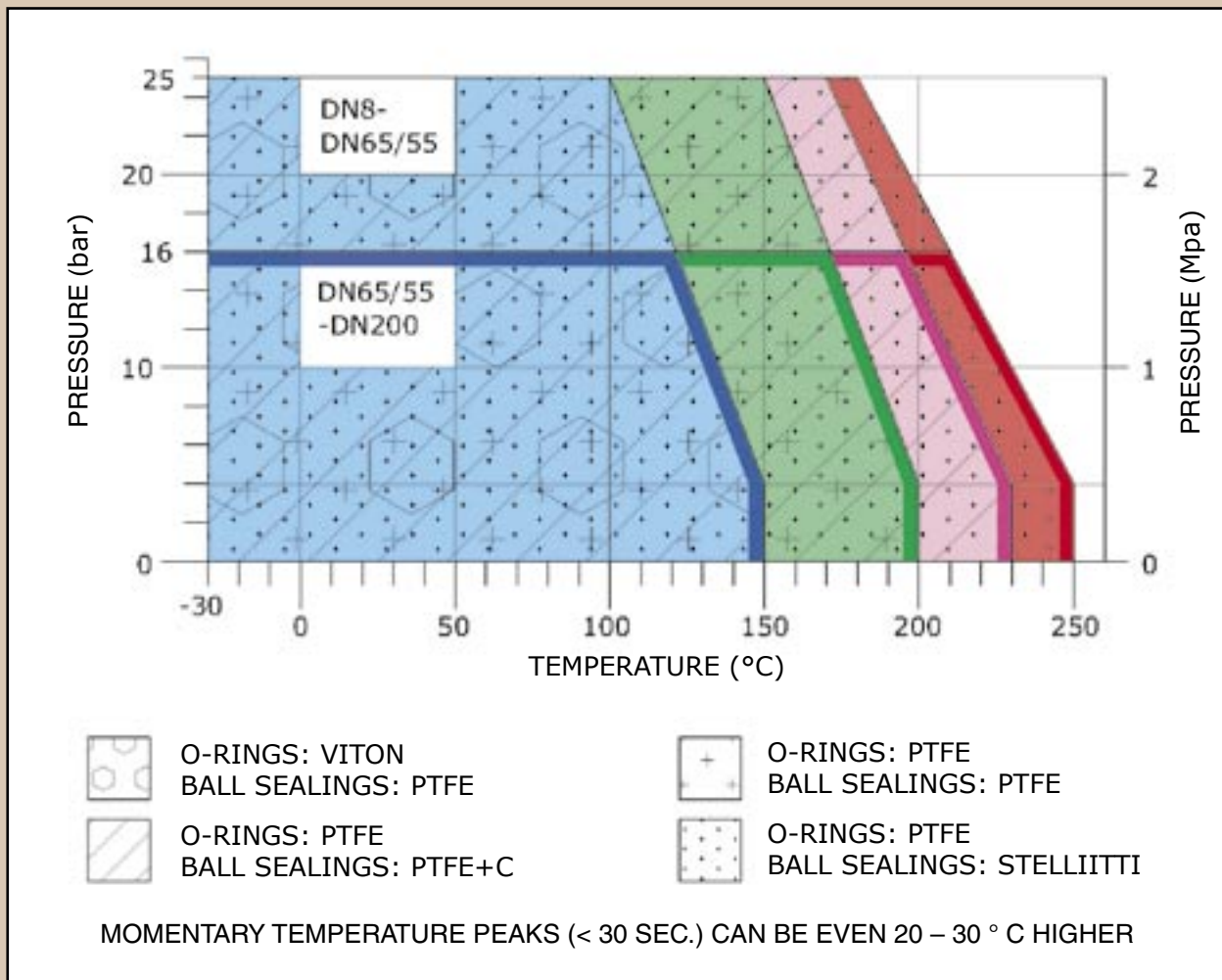
\*) Scal kit (complete)

**WWW.JOUKA.FI**

Somerotie 4, FIN-33470 YLÖJÄRVI, FINLAND  
Tel. +358 3 359 7500, Telefax +358 3 3597521

# MAINTENANCE

JOUKA pressure /temperature correlation for steel and stainless steel ball valves, with different ball sealing types.



**WWW.JOUKA.FI**

Somerotie 4, FIN-33470 YLÖJÄRVI, FINLAND  
 Tel. +358 3 359 7500, Telefax +358 3 3597521

## Joline

### Construction and function

Actuator construction is simple and reliable changing the straight motion into rotational motion. That is why Joline actuator has less wearing parts. Large bearing surfaces are securing long life cycle. Actuator functions are exact and clearance-free.

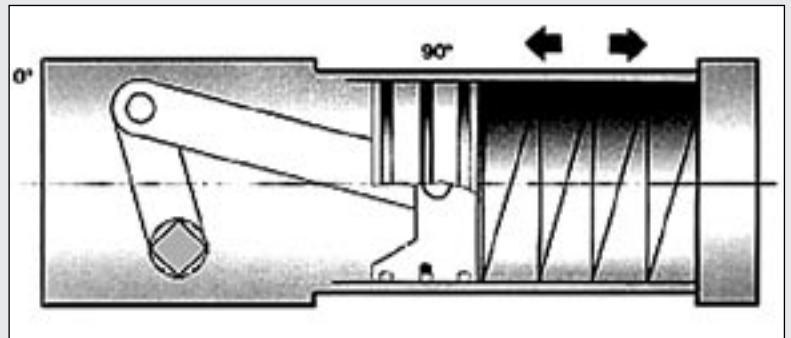
### Technical data:

**Max operating pressure:** 1 MPa (10 bar)

**Operating media:** Air, neutral gas or fluid

**Spring return:** Coil springs

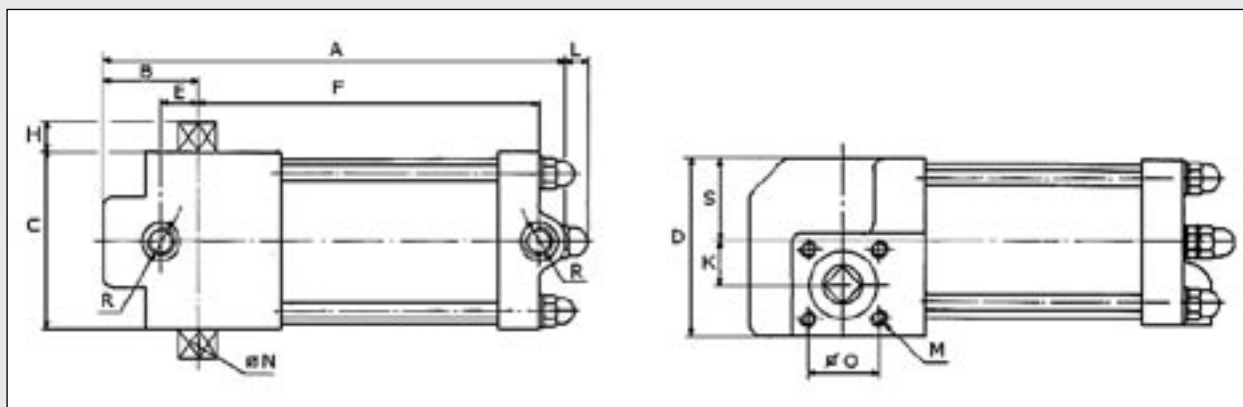
**Lubrication:** Not necessary. Bearings are low friction type.



**WWW.JOUKA.FI**

Somerotie 4, FIN-33470 YLÖJÄRVI, FINLAND  
Tel. +358 3 359 7500, Telefax +358 3 3597521

# ACTUATORS



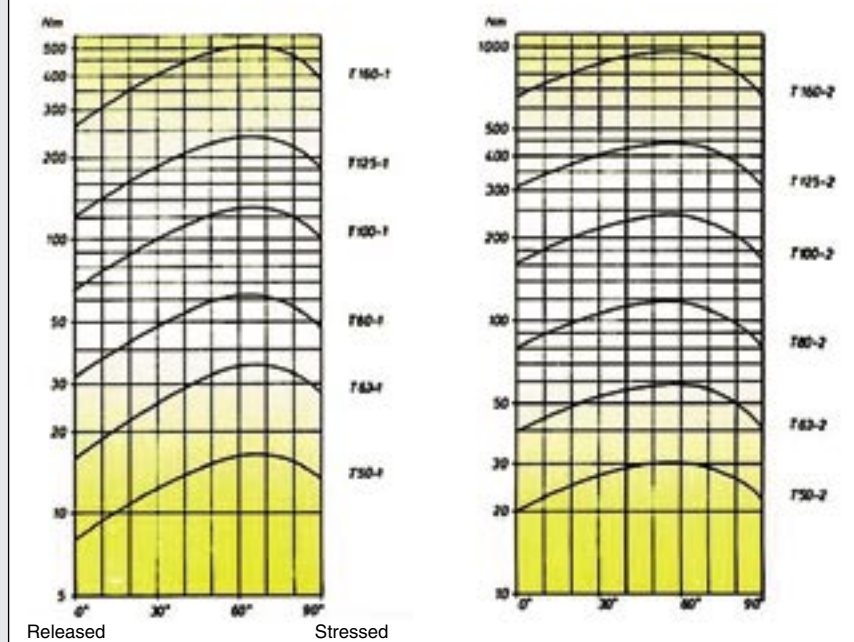
## SPRING RETURN

Type	Nm/ 5bar	A	B	C	D	E	F	H	K	N	R	M	S	Weight/ kg	ltr/ stroke
T-50-1	8	252	34	60	65	20	215	10	15	25	9,5	1/4"	M6	31	1,6
T-63-1	15	293	41	75	75	16	245	10	18	25	9,5	1/4"	M6	37,5	3
T-80-1	30	345	50	95	95	20	271	12	22	35	12	1/4"	M6	47	5
T-100-1	55	435	65	114	114	26	350	14	30	35	14,3	1/4"	M8	57	6,2
T-125-1	120	520	76	140	147	30	392	22	37	65	22	1/4"	M10	68	18
T-160-1	260	750	107	178	191	40	612	24	50	80	30	3/8"	M12	87	35

## DOUBLE ACTION

T-50-2	20	170	34	60	35	20	120	10	15	25	9,5	1/4"	M6	31	0,9
T-63-2	35	184	41	75	75	16	133	10	18	25	9,5	1/4"	M6	37,5	1,6
T-80-2	75	228	50	95	95	20	186	12	22	35	12	1/4"	M6	47	2,9
T-100-2	150	280	65	114	114	26	204	14	30	35	14,3	1/4"	M8	57	5
T-125-2	300	375	76	140	147	30	245	22	37	65	22	1/4"	M10	68	11
T-160-2	650	480	107	178	191	40	312	24	50	80	30	3/8"	M12	87	20

## Torque curves of JOLINE actuators



[WWW.JOUKA.FI](http://WWW.JOUKA.FI)

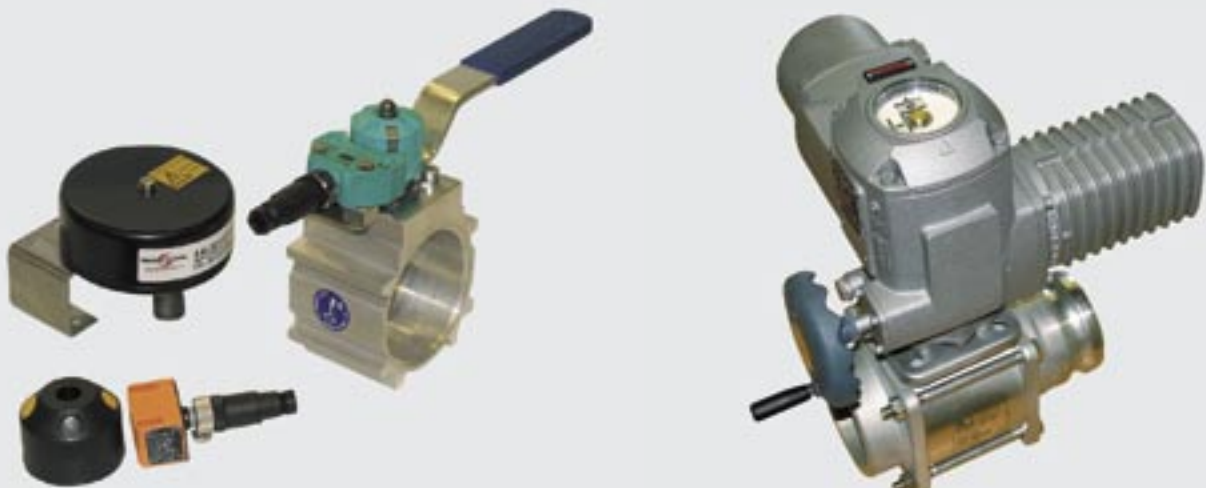
Somerotie 4, FIN-33470 YLÖJÄRVI, FINLAND  
Tel. +358 3 359 7500, Telefax +358 3 3597521

## ALL JOUKA BALL VALVES CAN ALSO BE QUIPPED WITH OPTIONAL ACTUATOR MODELS AND LIMIT SWITCHES

Pneumatic, hydraulic or electric actuators are available with different kind of optional limit switches and positioners.



JOUKA AP



Several alternatives of limit switches

# SAFETY VALVES



## Fire Safe valve

Det Norske Veritas has granted fire test certificate to Jouka Oy according to ISO 10 497  
DN 32 – 64 / PN 25  
DN 65 – 125 / PN 16

## Atex valves

For hazardous surroundings. Prevents static discharge in construction.  
ATEX-94/9/EC: EX II 3 GD,2/22.



## Novelty for Jouka double acting pneumatic actuator; digital positioner.

Continually adjusted computer control keeps the flow and/or pressure in constant value.



**WWW.JOUKA.FI**

Somerotie 4, FIN-33470 YLÖJÄRVI, FINLAND  
Tel. +358 3 359 7500, Telefax +358 3 3597521



# JOUKA

## PRODUCT GUIDE

### **JOUKA also offers subcontracting:**

#### **METAL PRESSINGS, DEEP DRAWINGS, MACHINE PARTS**

From 160 tons pressing to finest finishing. With our numerous hydraulic and mechanic presses and over 60 production machines we carry out many kinds of machining, CNC-machining, welding, assembly and polishing jobs.

#### **Tailor made products**

We help You to find a right solution from design and tools to final product.

#### **Favourable tools manufacturing**

The materials for the good product are efficient tool designing, manufacturing, tool service and possible rebuilding. Deep drawing belongs to our special skills.

#### **Flexible production**

Annual manufacturing amounts per item are typically something between some thousands to tens of thousands.

